

TimeTEX

Response Signal “No”

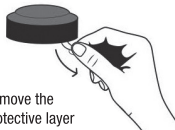
Battery replacement

You will require **2 x AAA batteries** and a screwdriver.

- the battery compartment is situated underneath the device
- remove the screws using a screwdriver and open the battery compartment cover
- insert the batteries as shown inside
- replace the battery compartment cover and insert the screws

AAA x2

Batteries already inserted



Remove the
protective layer
to activate

Battery disposal

This product has been manufactured using high-quality materials and components, which can be recycled and used again. For this reason, we are legally obliged to point out the following:

Batteries must not be disposed of in household waste. As the end user, you are legally obliged to take used batteries to an appropriate collection point. You can take old batteries to your local authority collection points or hand them in at any location where batteries of the relevant type are being sold. You can also hand in batteries free of charge at our dispatch warehouse (see below) or send them back there. If you wish to take advantage of this option, please send your old batteries marked as “used” to the following address:

TimeTEX HERMEDIA Verlag GmbH
Ländenstraße 10 · 93339 Riedenburg · Germany

TimeTEX HERMEDIA Verlag GmbH
Deggendorfstr. 5 · 4030 Linz · Austria

TimeTEX HERMEDIA Verlag GmbH
Stemmerstr. 54 · 8238 Büsingen · Switzerland

Please note, our obligation to take back old batteries is limited to the types of batteries currently or previously available as new in our product range, and in the customary quantities expected for end users.

Old batteries contain valuable raw materials that can be recycled.

The crossed-out wheellie bin means: disposable and rechargeable batteries must not be disposed of in household waste.

Pb: Battery contains over 0.004 percent by mass lead

Cd: Battery contains over 0.002 percent by mass cadmium

Hg: Battery contains over 0.0005 percent by mass mercury



Electronic device disposal

The “crossed-out wheellie bin” sign means: electrical and electronic devices must not be disposed of via household waste. These devices should, in fact, be collected separately from unsorted residential waste and can be handed in free of charge at a local authority collection point. Old disposable or rechargeable batteries that are not sealed inside the old device should be removed before it is handed in at the fixed collection point. You must take your own responsibility for deleting any personal data on old devices for disposal.



WEEE-Reg.-Nr.: 79696058 | ARA/ERA number: 40640

www.timetex.at | www.timetex.de | www.timetex.ch

©TimeTEX HERMEDIA Verlag GmbH · Ländenstraße 10 · 93339 Riedenburg · Germany
TimeTEX AT · Linz | TimeTEX CH · Büsingen

Art. 62631



4 055218 626319